

Food Safe Product Sensor- for Joule Temp

Phasefale Part # MPROBE/PS



Introducing a Food Safe Product Sensor designed to be used with JouleTemp

- for **Cooling & Heating**, applications
- High Precision temperature reading (0.1°C display & 0.05°C internal precision)
- Can be used as control sensor or separate logging sensor on S2 or S7 (2nd and 3rd logging inputs)
- Silicon leads
- Temperature Range -50°C to + 120°C
- Fully Waterproof- suitable for immersion
- Standard M Probe thermistor element

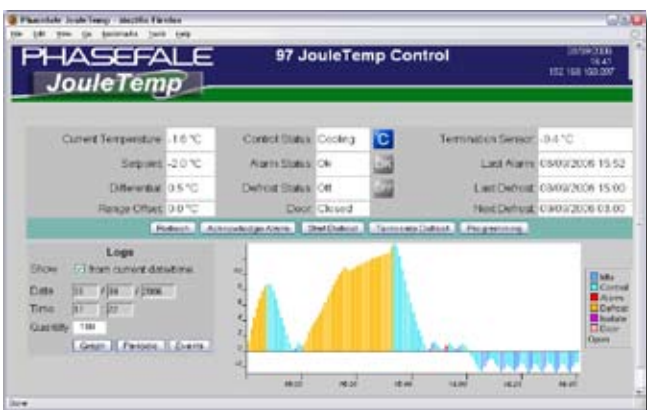
The JouleTemp product sensor is suitable for many food and blood control and monitoring applications. JouleTemp supports up to 3 temperature sensors connected with data logging. Any combination of standard M probe sensors (as normally supplied with JouleTemp) and Product Sensors can be used.

Specifications:

Material: Stainless Steel, Silicon Cable
Length: 250mm rod length
Cable: 1500mm
Diameter: 8mm Tube
Phasefale Part Number: MPROBE/PS

JouleTemp automatically provides graphs of temperatures using any Web browser.

JouleTemp is ideal for HACCP food safety programs



PHASEFALE

CONTROL

MONITOR

PROTECT

Phasefale Controls PIL www.phasefale.com.au sales@phasefale.com.au +6139584 5590